



## **NORTH CAROLINA**

Department of Transportation



# **Craven County Comprehensive Transportation Plan (CTP)**

Catherine Bryant, EI  
NCDOT – Transportation Planning Division (TPD)

November 8, 2017

# What is a CTP?

- Comprehensive Transportation Plan
- Long-range, multi-modal transportation plan
  - Vision plan
  - Craven County Base Year of 2015
  - Craven County Future Year of 2040
- Developed cooperatively among local stakeholders (businesses, residents, etc.), Down East RPO, New Bern Area MPO, and NCDOT based on local needs
- Incorporates land use plans, community & statewide goals
- Identifies deficiencies to develop improvements/recommendations
- Recommendations are concepts
- Facilitates local governments with transportation planning
- Generally scheduled to take about 18 months, but can be shorter or longer depending on the complexity of the study

# Why is there a CTP?

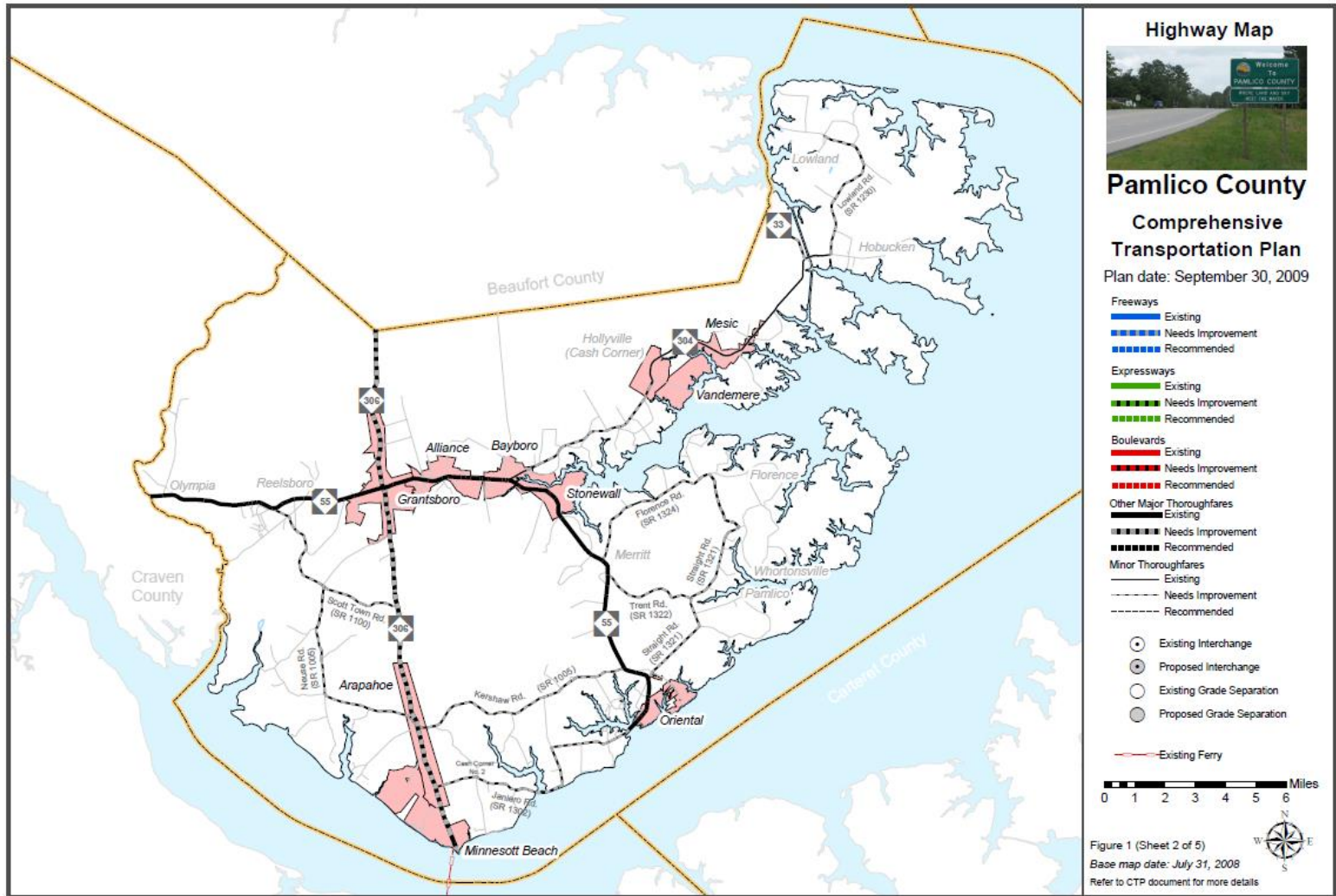
- **Federal and State Law Requires It!**
- Federal legislation requires states to develop statewide long-range transportation plans
- North Carolina General Statutes (NCGS) 136-66.2 – Development of a coordinated transportation system and provisions for streets and highways in and around municipalities<sup>1</sup>.
  - *State law mandates that municipalities and/or counties develop a comprehensive transportation plan that will serve existing and future traffic.*

1. [http://www.ncleg.net/EnactedLegislation/Statutes/HTML/BySection/Chapter\\_136/GS\\_136-66.2.html](http://www.ncleg.net/EnactedLegislation/Statutes/HTML/BySection/Chapter_136/GS_136-66.2.html)

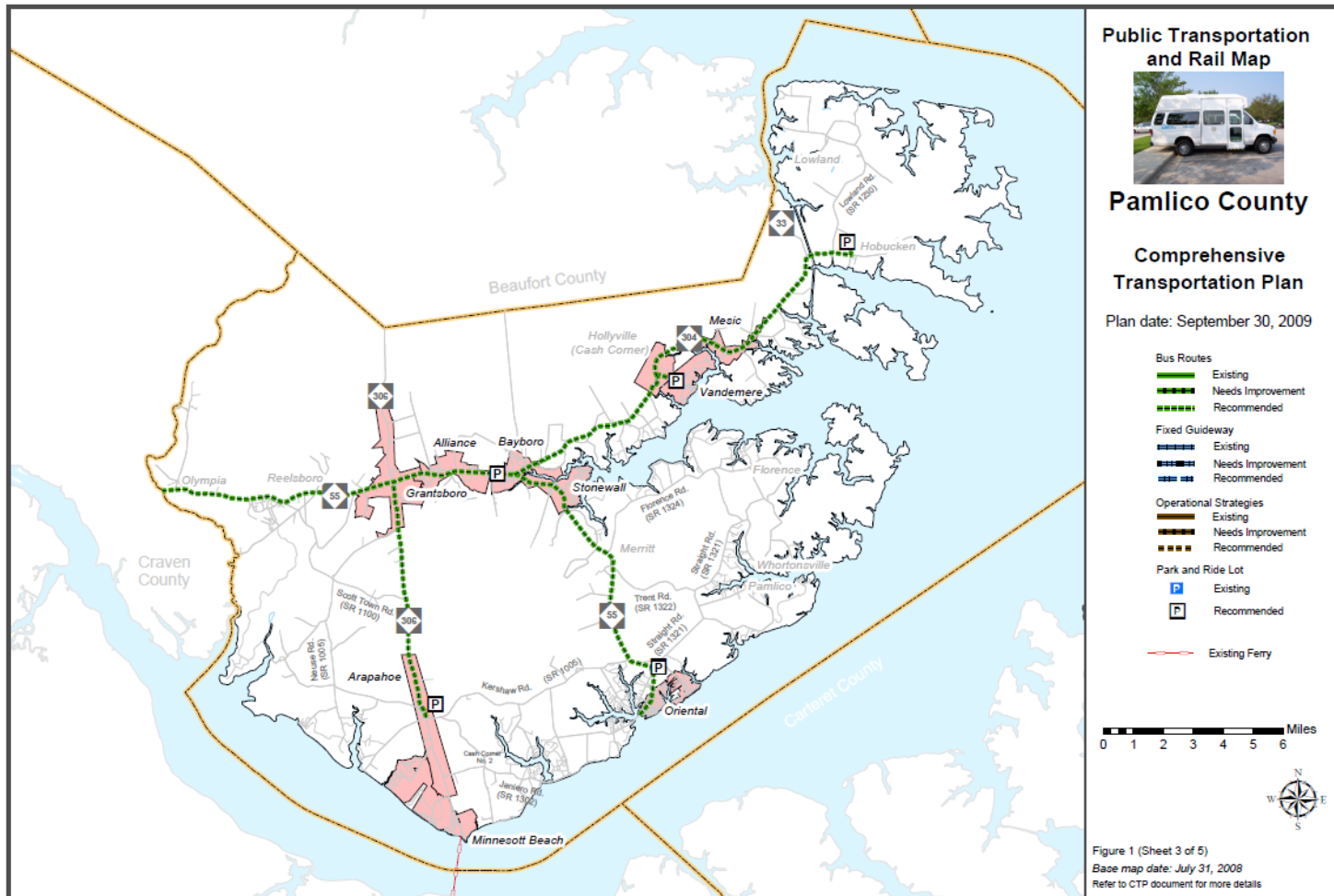
# What is in a CTP?

- Multimodal Maps
  - Highway
  - Public Transportation and Rail
  - Bicycle
  - Pedestrian
- Recommendations
  - Existing
  - Needs Improvement
  - Recommended
- Current and Future Conditions
  - Lanes
  - Right-of-Way (ROW)
  - Volume and Capacity

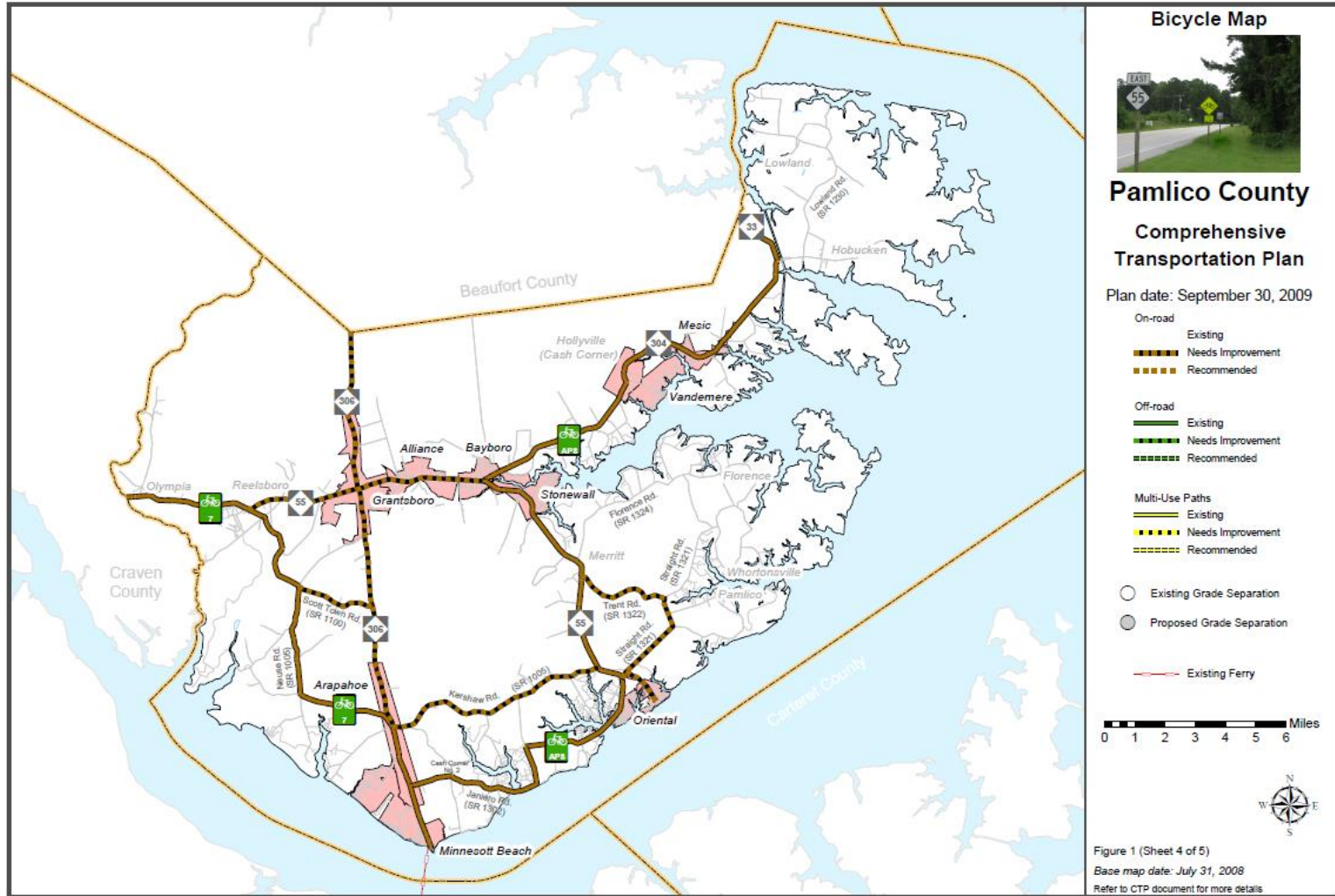
# Example Highway Map



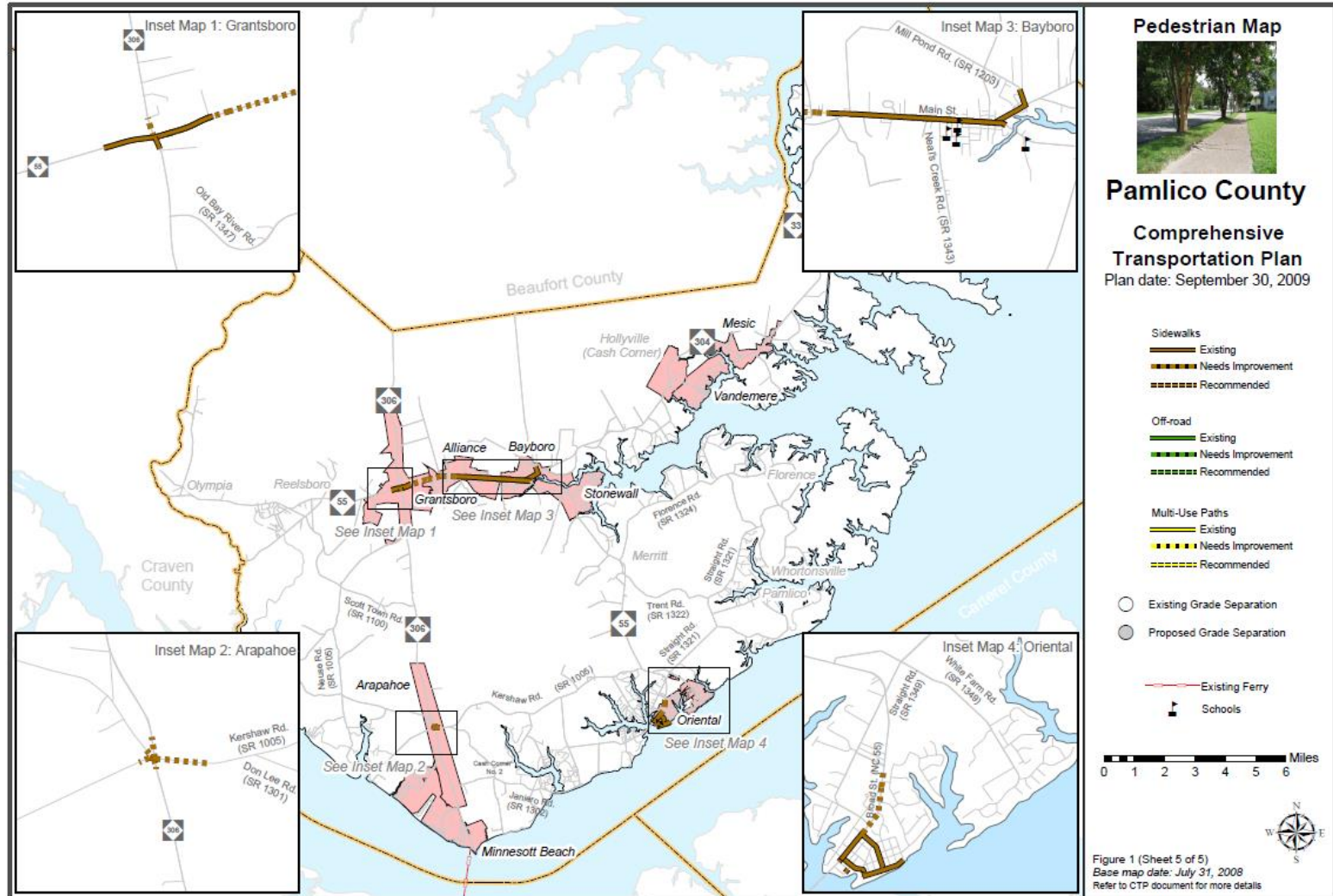
# Example Public Transportation and Rail Map



# Example Bicycle Map

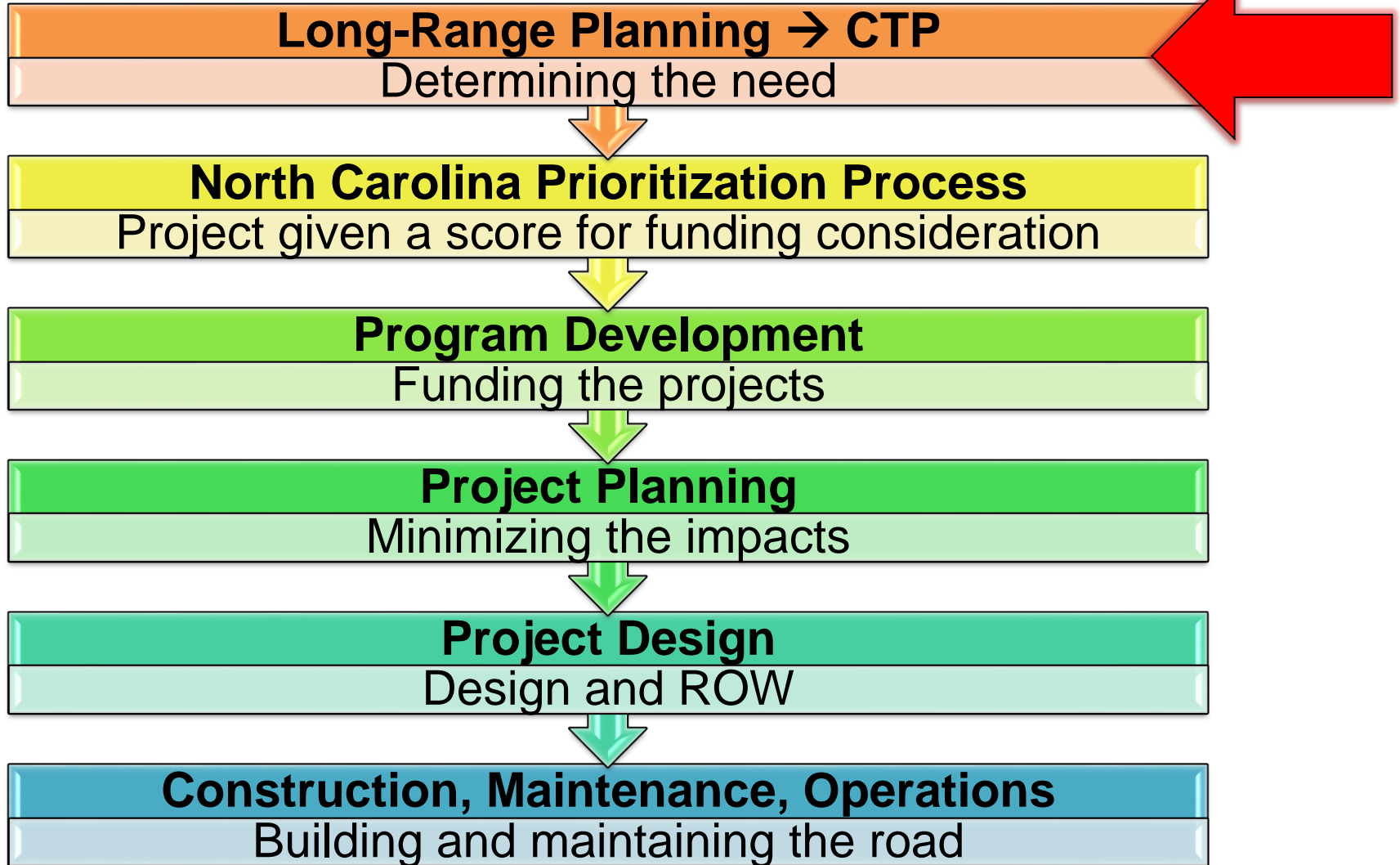


# Example Pedestrian Map





# Where does a CTP fit into the “Big Picture”?



# Craven County CTP

- Purpose of this CTP will be to determine transportation needs based on local vision, expected future population and employment growth, and locally adopted plans (bicycle, pedestrian, MTP, etc.) for all of Craven County

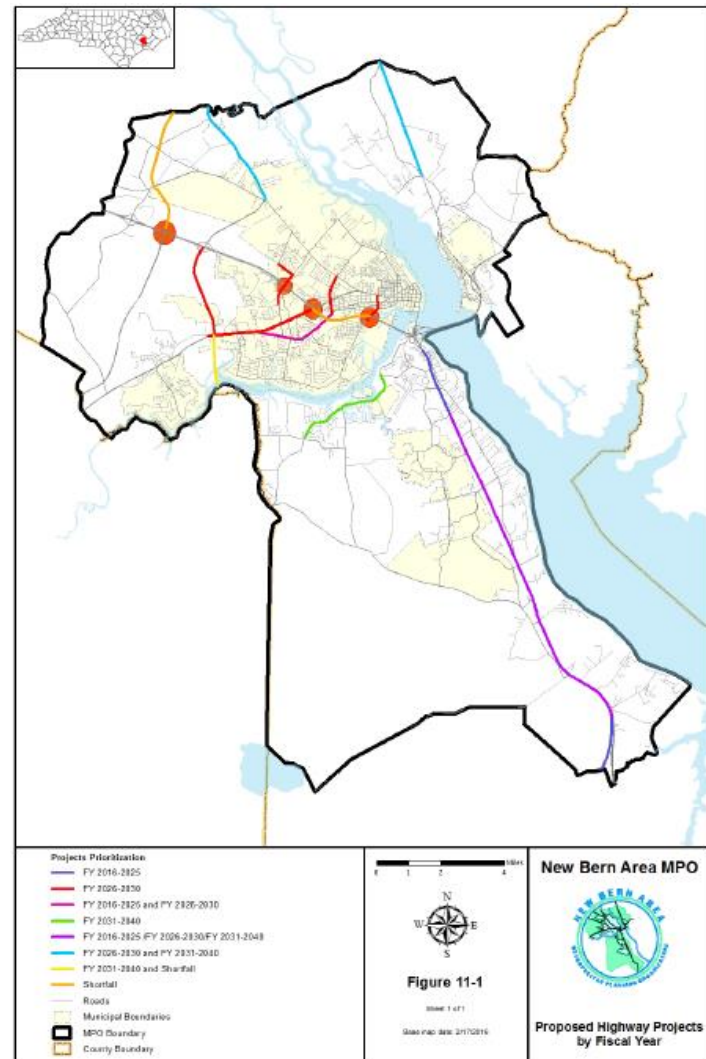
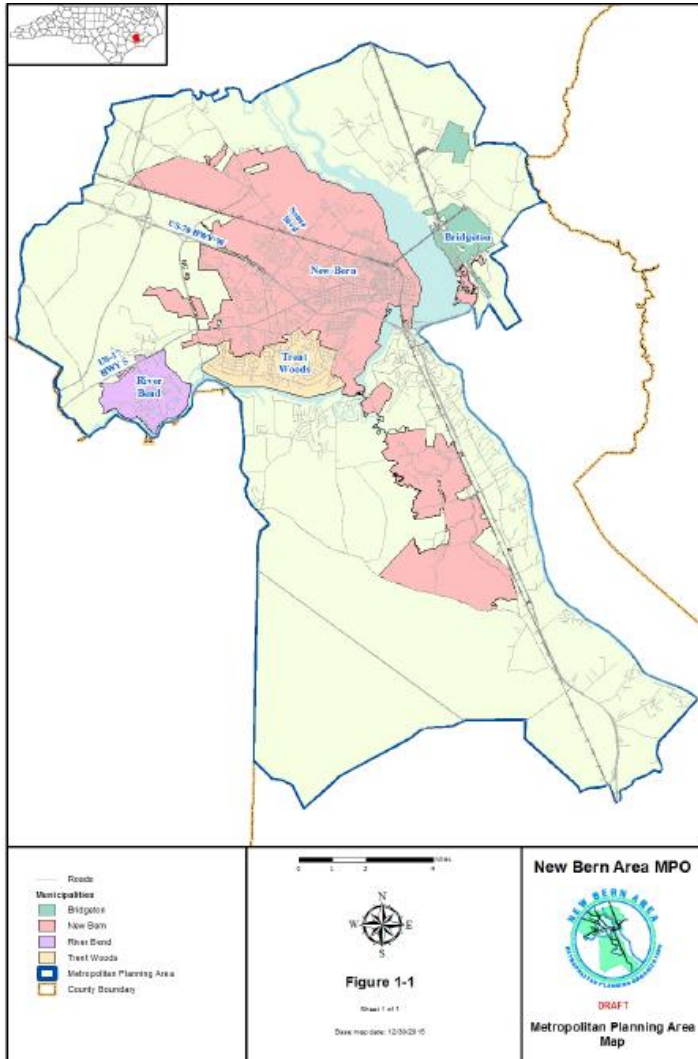
# Existing Plans

- 1992 Craven County Thoroughfare Plan
- 1993 City of Havelock Thoroughfare Plan
- 1993 New Bern – Bridgeton – Trent Woods – River Bend Thoroughfare Plan
- 2002 Eastern Carolina Joint Land Use Study

# Existing Plans

- 2016 New Bern Metropolitan Planning Organization (MPO) Metropolitan Transportation Plan (MTP)
- 2016 Cherry Point Regional Joint Land Use Study
- 2009 Craven County Coastal Area Management Act (CAMA) Core Land Use Plan
- 2015 Pamlico Sound Regional Hazard Mitigation Plan (Draft)
- 2014 City of Havelock Comprehensive Transportation Plan (CTP)
- 2015 City of Havelock Comprehensive Land Use Plan
- Various City of New Bern Transportation Plans

# 2016 New Bern MPO Metropolitan Transportation Plan (MTP) Planning Area & Proposed Highway Projects



# CTP Process



# CTP Process



- Establish a public involvement process
- Set the vision for the plan followed by goals and objectives

# CTP Process



- Collect population and employment data
- Update the Travel Demand Model
- Determine deficiencies for the multimodal transportation system



# CTP Process



- Identify key issues
- Identify transportation plan alternatives
- Evaluate transportation alternatives

# CTP Process



- Develop Draft CTP
- Document transportation solutions and decision making process
- Present to local officials for their input
- Public Involvement

# CTP Process



- Local adoption
- RPO endorsement
- MPO adoption
- NCDOT BOT adoption

# Benefits of the CTP

- A collaborative transportation plan that is coordinated with the local land use plans based on local priorities that encourages multi-modal transportation connectivity
- Results feed into the NCDOT prioritization process and help guide the RPO and MPO in developing project prioritization
- Common, long-range vision for facilities among local governments, RPO, MPO, and NCDOT
- CTP's are not fiscally constrained

# CTP Steering Committee

- Role
  - Represent stakeholders in the county
  - Coordinate with local councils and planning boards
  - Assist with public involvement
  - Review plan as it is developed
  - Assist with adoption and endorsement
- Members
  - NCDOT – Transportation Planning Division and Division 2
  - RPO – Down East RPO
  - MPO – New Bern Area MPO
  - Local Stakeholders – County, towns, Military, business interests, multi-modal reps, environmental interests, Title VI, schools, elderly, etc.
  - The Public

# Next Steps

- CTP Vision, Goals, and Objectives Discussion
  - Starting point could be New Bern MPO MTP Vision and Goals Statements
- Goals and Objectives Survey
  - Public perception of transportation-related issues
- Title VI and Title VI Maps
- Identification of roads to be studied in the CTP
  - Craven County Basemap

# Contacts

## NCDOT Transportation Planning Division (TPD)

Catherine Bryant, EI  
Project Engineer  
[cbryant6@ncdot.gov](mailto:cbryant6@ncdot.gov)  
(919) 707-0979

Behshad Norowzi  
Coastal Planning Group  
Supervisor  
[bnorowzi@ncdot.gov](mailto:bnorowzi@ncdot.gov)  
(919) 707-0920

## NCDOT Highway Division 2

Jeff Cabaniss, PE  
Planning Engineer  
[jcabaniss@ncdot.gov](mailto:jcabaniss@ncdot.gov)  
(252) 439-2800

## Down East RPO

Patrick Flanagan  
Planning Director  
[pflanagan@eccog.org](mailto:pflanagan@eccog.org)  
(252) 638-3185 ext.3031